

erwin® Data Catalog by Quest®

AT A GLANCE

erwin® Data Catalog by Quest® automates enterprise metadata management, data mapping, code generation and data lineage for faster time to value and greater accuracy for data movement and deployment projects. Harvest metadata from various data sources and map data elements from source to target, including data-in-motion, plus harmonize data integration across platforms. When combined with erwin Data Literacy by Quest, see an accurate picture of your business data assets for the data intelligence to govern and accelerate digital transformation projects, such as Big Data deployments, Data Vaults, data warehouse modernization and cloud migration – all without heavy reliance on technical resources.

KEY FEATURES

erwin Data Catalog provides an automated metadata-driven approach to support enterprise data management and data preparation through these features:

- **Automated metadata harvesting, cataloging and curation** — Harvest detailed technical metadata from a broad range of metadata sources. Use included erwin Standard Data Connectors by Quest to ingest and auto-document data-at-rest from common industry JDBC-compliant DBMS and flat file metadata. Add optional erwin Smart Data Connectors by Quest to harvest more complex data-at-rest sources, as well as data-in-motion metadata from ETL/ELT, procedural and scripting code, BI/reporting environments, and cloud environments and applications.
- **Easy data mapping** — Use drag-and-drop and auto-mapping features to accelerate the creation of metadata-driven mapping documents, eliminating manual work and costly errors seen with the traditional Excel approach.
- **Version management and change control** — With built-in versioning, baseline and archive all mapping documentation and view change comparison reports to enable efficient IT and regulatory audits and change control.
- **Upstream and downstream lineage** — Generate on-demand lineage down to the column level and visualize data flows from source systems all the way to the reporting layers, including all transformations. Fully configurable and navigable lineage diagrams provide high-level business views as well as detailed technical depictions. Filter and zoom capabilities make it easy zero-in on sensitive data and other key impacts.
- **Impact analysis** — Instantly identify the impact of change to an attribute or table across your data landscape in a matter of seconds, saving valuable time and resources and minimizing risk.
- **Dashboard visibility** — Better manage and holistically understand the composition of your data landscape by viewing and drilling into key data catalog attributes such as sensitive data distribution, top data sources, data lineage composition and operational elements.
- **Sensitive data classification and management** — Curate metadata to classify, or leverage lineage analysis to bulk classify, sensitive data elements and manage them through a sensitive data dashboard.
- **Automated data model harvesting from erwin Data Modeler Workgroup Edition by Quest** — Schedule the bulk harvesting and cataloging of erwin data models, model mappings and naming standards maps to align data modeling and intelligence efforts.
- **Integrated data profiling** — Profile data sources and integrate data quality details and metrics alongside metadata details for easy visibility and understanding.

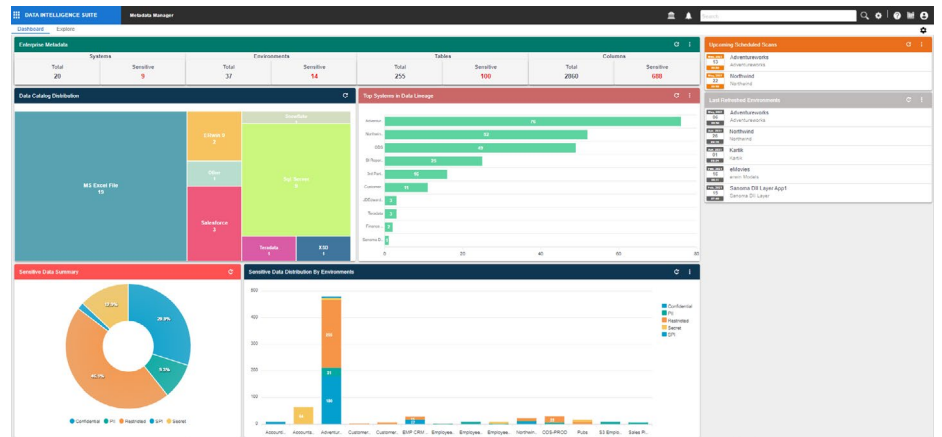
KEY BENEFITS/RESULTS

- Automate the harvesting, cataloging and curation of any metadata from anywhere into a centralized enterprise metadata catalog, including reference data, data movement processes, data lineage and impact analysis
- Provide a central governance framework for data, classification and integration independent of siloed data management technologies
- Support IT audits and regulatory compliance by governing enterprise data assets as well as data management processes and infrastructure for both IT and business stakeholders
- Gain faster time to value and greater accuracy for data movement and deployment projects through governance, automated metadata enrichment, data profiling, re-use and guided workflows
- Reduce the need for costly manual intervention by automating everything from the generation of Big Data, ETL and database procedural code to detailed data lineage and impact analysis views
- Provide the visibility to understand, manage, protect and best leverage data across the organization

- **Reference data management** — Centrally map and manage reference data code sets to ensure accuracy and quality across enterprise datastores and applications. Versioning and change management capabilities ensure that code sets are applied consistently and their content and usage is easily auditable and transparent to stakeholders.
- **Requirements, testing, deployment management and integration** — Take control of the software delivery lifecycle while providing visibility to stakeholders with built-in lifecycle management capabilities and integrations.
- **Support for re-platforming and data migration** — Easily scan metadata from various operational systems to migrate the schema for data movement processes. Integration with an in-house ETL tool generates jobs to move data to the target systems.
- **SAML 2.0 integration** — Accelerate the deployment and adoption of erwin Data Catalog by aligning it with your security and access-control infrastructure.
- **Integration with erwin Data Literacy** — Extend organizational data intelligence and enable data governance with integration of a business glossary attaching business terms, policies, rules and more to physical data assets. Provide fast self-service data discovery and socialization capabilities through AI, elastic search, visual discovery tools and a role-based business user portal.

ABOUT QUEST

Quest creates software solutions that make the benefits of new technology real in an increasingly complex IT landscape. From maximizing the value of their data, to Active Directory and Office 365 management, and cybersecurity resilience, Quest helps customers solve their next IT challenge now. Quest Software. Where next meets now.



erwin Data Catalog provides the visibility to understand and better manage your data landscape from an IT perspective. Data lineage and dashboards, such as the erwin Data Catalog dashboard, make it easy to contextualize your data landscape at a high level as well as drill into data details.